

user's guide

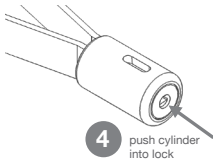
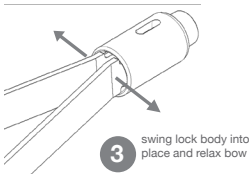
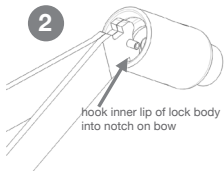
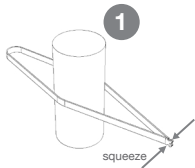
Ti

Gr

elegant bike security™

Using:

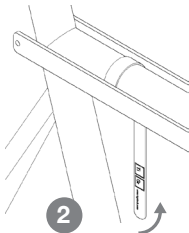
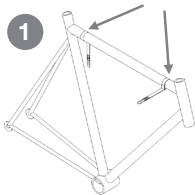
The TiGr™ is different than other locks. Become familiar with locking and unlocking the TiGr™ before using it in the field.



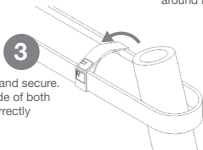
Storing:

Your TiGr™ Lock is supplied with 2 straps for stowing the bow. The top tube is generally a good place for storage. Here is one option:

Attach with fuzzy (loop) side in/next to frame and thread end thru buckle



Wrap so strap double backs around buckle



Bow should be snug and secure.
Logo will be on outside of both
straps when done correctly

Never mount the straps/lock in a way that interferes with shifter or brake functions.
Never use a defective or worn out strap.

Tips:

The TiGr™ brings enhanced security, but...
think about how and where you lock your bike.

Some things to consider:

1. Know where the high risk areas are and avoid them.
2. Make sure you're locking to something secure, make sure the bike and lock cannot be lifted off the top of the object.
3. Keep the lock as low as possible to make attacks more difficult.
4. Lock frame and both wheels if possible and take easily removed accessories with you.
5. Avoid leaving your bike locked for long periods of time or securing it in a predictable way such as using the same rack every day.
6. Lock the bike where you can see it, if possible

Note:

Your TiGr™ comes with a **key code** either on a tag or stamped on the key. **Make a record of the code** and keep it safe, for security reasons we **do not** keep a record. If you lose your key contact us and we will supply a copy.

tigrlock.com